

# RTScript cDNA Transcriptase Enzyme

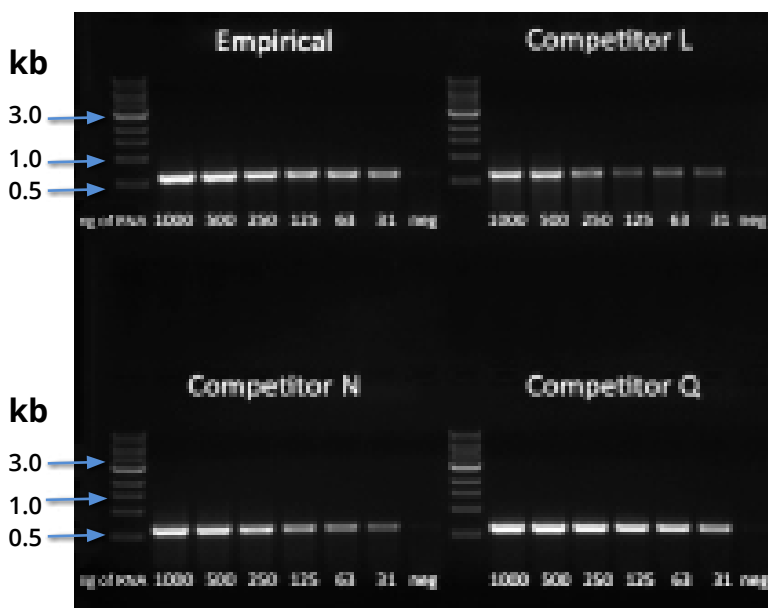
Enzymes and Reagents

PCR | qPCR | RT | Kits | Oligonucleotides

## Performance

Empirical's RTScript™ cDNA Transcriptase is a modified version of M-MLV reverse transcriptase with RNase H activity deactivated and increased thermal stability. In combination with optimized buffers and reagents, Empirical's RT enzyme synthesizes complementary DNA from single-stranded RNA or DNA templates.

Empirical's RTScript™ is sensitive, specific and capable of synthesizing highly-structured and long cDNA fragments. Produced cDNA is appropriate for both PCR and qPCR analysis.



### Empirical's RTScript™ cDNA Enzyme is highly sensitive.

RTScript™ was compared to the RT kits of leading competitors with decreasing human RNA template. Synthesized cDNA was amplified using a  $\beta$ -actin primer set.

## Features:

### Robust Performance

- Higher cDNA yields than some leading competitors.

### High Sensitivity

- Efficient synthesis of cDNA from low-abundance RNA transcripts.

### Increased Specificity

- Deactivated RNase activity and increased thermal stability.

### Versatile Performance

- Effective synthesis of cDNA from 100bp up to 10kb in length.

Item Number	Units
RT-ENZ-20K	20,000 units
RT-ENZ-40K	40,000 units
RT-ENZ-100K	100,000 units

## Supplied With:

- Reverse Transcriptase (200/ uL)
- 5X RT Reaction Buffer

## Related Products:

- Taq DNA Polymerase
- FlashTAQ Hotstart DNA Polymerase
- Integrity High Fidelity 5X DNA Polymerase
- PFU 50 High Fidelity 50X DNA Polymerase
- DNA Polymerase Master Mixes
- UltraPure dNTP Soution Mix, 10mM each
- UltraPure dNTP Solution Set, 100mM each
- EasyLoad DNA Ladders
- 6X MeanGreen Loading Dye
- GC Enhancer



TO ORDER, REQUEST SAMPLES OR FOR MORE INFORMATION, CONTACT:  
Empirical Bioscience, Inc. | 2007 Eastcastle Drive SE  
Grand Rapids, MI 49508 | Phone/Fax: 877.479.9949  
Email: [sales@empiricalbioscience.com](mailto:sales@empiricalbioscience.com)  
[empiricalbioscience.com](http://empiricalbioscience.com)