

WarmStart RTScript Reverse Transcriptase

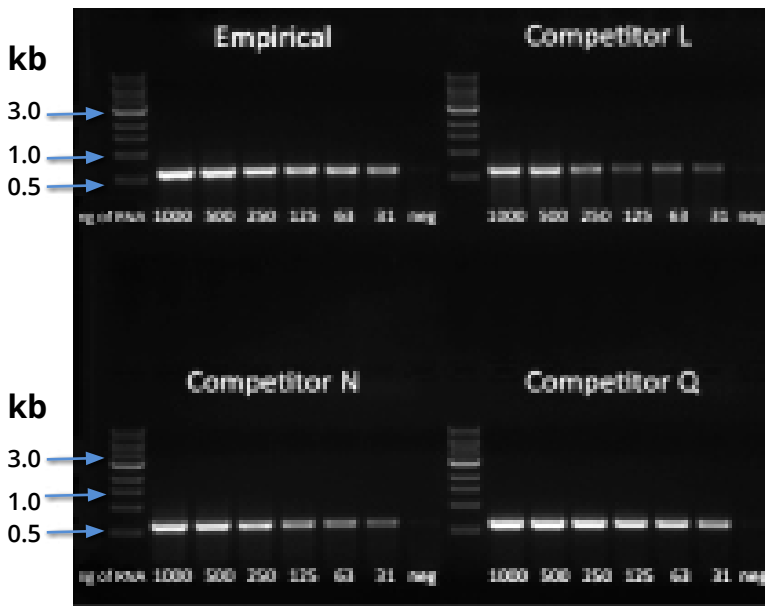
Enzymes and Reagents

PCR | qPCR | RT | Kits | Oligonucleotides

Performance

Empirical's WarmStart RTScript Reverse Transcriptase is a modified version of M-MLV reverse transcriptase with RNase H activity deactivated and increased thermal stability. In combination with optimized buffers and reagents, Empirical's RT enzyme synthesizes complementary DNA from single-stranded RNA or DNA templates.

Empirical's RTScript is sensitive, specific and capable of synthesizing highly-structured and long cDNA fragments. Produced cDNA is appropriate for both PCR and qPCR analysis.



Empirical's RTScript™ cDNA Enzyme is highly sensitive.

RTScript™ was compared to the RT kits of leading competitors with decreasing human RNA template. Synthesized cDNA was amplified using a β -actin primer set.

Features:

Robust Performance

- Higher cDNA yields than some leading competitors.

High Sensitivity

- Efficient synthesis of cDNA from low-abundance RNA transcripts.

Increased Specificity

- Deactivated RNase activity and increased thermal stability.

Versatile Performance

- Effective synthesis of cDNA from 100bp up to 10kb in length.

Item Number	Reactions
WS-RT-ENZ-200	200
WS-RT-ENZ-400	400
WS-RT-ENZ-1000	1000

Supplied With:

- WarmStart Reverse Transcriptase 20X
- 5X RT Reaction Buffer

Related Products:

- Taq DNA Polymerase
- FlashTAQ Hotstart DNA Polymerase
- Integrity High Fidelity 5X DNA Polymerase
- PFU 50 High Fidelity 50X DNA Polymerase
- DNA Polymerase Master Mixes
- UltraPure dNTP Solution Mix, 10mM each
- UltraPure dNTP Solution Set, 100mM each
- EasyLoad DNA Ladders
- 6X MeanGreen Loading Dye
- GC Enhancer